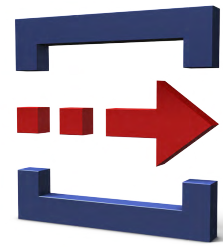


[LDMS]

ArchiveManager



LDMS/p ArchiveManagers were developed to facilitate fast access to the centralised LDMS/z archive from widely used Office environments. They thus combine the user-friendliness of the Windows systems with the security of a mainframe-based archive system. All data is stored in an archive on an IBM zServer – renowned for its dependability and system stability – in a manner legally compliant with the relevant regulations. The existing security and role systems are integrated – data security is thus guaranteed.

LDMS is a host-based document management system, allowing it capture and manage all the different document types existing within a single company (Office files, AFP lists, multimedia files, etc.). This also makes it the ideal archive for SAP: in addition to conventional host data it can also archive all documents and document data originating from SAP systems in a legally compliant manner.

A common characteristic of all ArchiveManagers is the feature allowing employees to research archives and view documents from their desks using their preferred programme. No special client is required. Three ArchiveManagers are appeared up until now:

- LDMS/p FileManager – for the Windows Explorer
- LDMS/p MailManager – for Lotus Notes
- LDMS/p Archive Link – for SAP



... for Windows Explorer

Archiving documents:

- mark them,
- right mouse click, "Archive"
- Specify duration of archiving
- finished

LDMS/p FileManager for Windows

With the help of LDMS/p FileManager both the archiving and the recovery of all files using Windows Explorer are possible with just one mouse click. All information regarding archived files is stored in an Archive Directory on the user's hard drive and can be easily accessed using the familiar Explorer procedure. The directory has the same file structure as the workgroup; users can thus get their bearings quickly.

An approx. 1 KB large administration file is created in the directory for every archived file. The file includes information on user, origin, keywords, LDMS serial number, archive location and much more.

The LDMS/p module FileManager for Windows is required to connect each Windows PC to the centralised archives. In addition to this the LDMS/p xSpooler has to do its stuff in the LAN. Its task is to transfer the files to the centralised archive.

Replacement and/or additions to the existing data storage system using a proven archive solution not only leads to a reduction in the load on file systems but is also cost effective and quick to implement.

... for Lotus Notes

Archiving Notes-documents

- with all attachments or individually
- in the original format or converted
- automatically or manually
- without wasting storage space

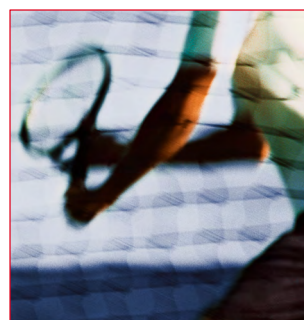
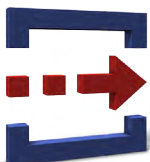
LDMS/p MailManager

LDMS/p MailManager enables companies using Lotus Notes to integrate the LDMS/z centralised archive into Lotus Notes exactly according to their requirements. All Notes documents can be transferred from Notes to a long term archive, either together with all their attachments or individually.

Accessing of archived documents is also carried out directly from the familiar Notes client: emails marked with a CD symbol are stored in the centralised LDMS archive and then only displayed as a placeholder in Notes – the original in the Notes database is deleted.

As an option all Notes documents can either be stored in the original Notes format (for display in Notes); converted into a "long term readable" format such as TIF or PDF (for application-independent display) or in both formats. Archiving can either be automatic according to predefined criteria or carried out manually by the user. The standard index, e.g. for emails, is the subject heading. This suggestion can be overwritten by the user when using the manual archiving option. Monitoring of doubles ensures that identical attachments included in several different emails are only filed once in the archive.

LDMS/p MailManager reduces hard- and software investment costs and takes the load off the Notes administrator and the Lotus Notes database.



LDMS/p Archive Link

Companies using market leading SAP R/3 ERP standard software can archive all document data as well as scanned-in documents or print lists easily and quickly (up to 5 000 documents/h) in the centralised LDMS/z archive. As a result the SAP database is leaner and the system performs better.

Since LDMS/p Archive Link handles all SAP-specific authorisations, user administration, search features, etc. all archived documents remain accessible for users: for viewing purposes they can access documents from the centralised archive from the familiar SAP environment.

Since all data logically remains in the SAP system and the index for data access is part of the SAP procedure all SAP has to do is forward the requests for viewing or archiving to LDMS. LDMS is also responsible for the provision, recopying, deletion and updating of the SAP documents.

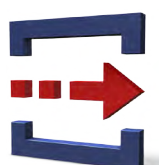
With the help of the LDMS/p Archive Link and xSpooler modules SAP batch data can be transferred to the centralised archive on the zServer. The latter is connected to SAP, is, however, administered entirely by SAP itself.

Documents and document data which are no longer required in the SAP system are archived out of the operative database using SAP tools; are, however, also always accessible in the centralised LDMS archive for evaluation purposes or restoring to the SAP database.

... for SAP

- Archiving SAP-documents, searching and editing directly from the SAP GUI
- in the only mainframe archive with a certified SAP interface
- Administration entirely in SAP

SAP Certified
Integration



www.si-software.com
www.betasystems.com

 **beta**systems