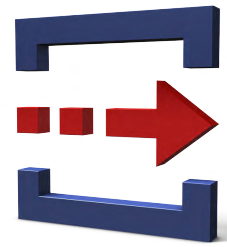
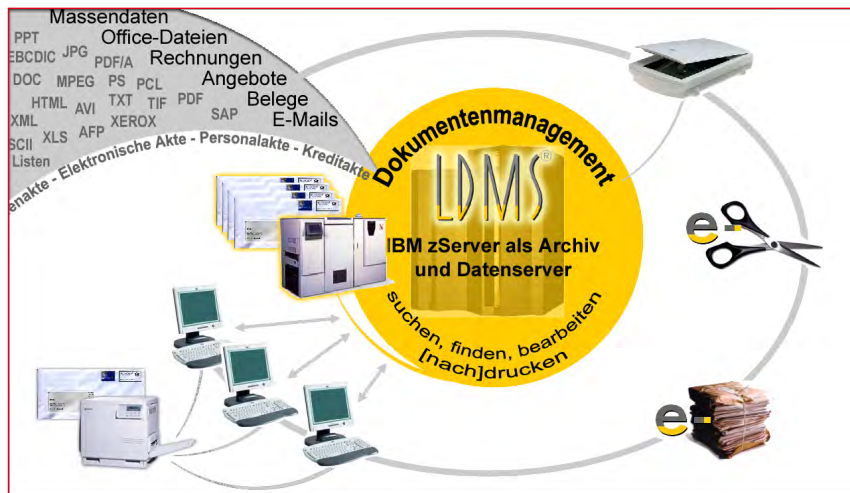


[LDMS]

The central archive –
for all company documents



Large Documents Management System is a reliable and high-performance solution for archiving and bulk processing a wide range of electronic documents.



Benefit:

- Central longterm-archive – for all kind of documents
- Elektronic files
- Certified SAP-interface
- Workflow & processing of transactions
- Powerful clients
- Comfortable search-functions
- Working as on paper

- The central availability of all documents in one archive on the host helps to cut infrastructure costs and enhances the efficiency of business processes.
- LDMS ensures the clever management; quick availability and safe storage (incl. back-up concept) of existing digital documents.
- Client solutions are customised thanks to a modern, open architecture and a modular structure.



The right information – at any time – without delay?

- One central archive ...
Office documents, AFP lists, SAP output, scans, e-mails, images and videos separate archives for almost every format, and even per department ...
- Print optimisation ...
Process forms and brochures, invoices, delivery notes and salary statements at regular intervals: generation, printing, dispatching, archiving ...
- Managing lists ...
The courier delivers printouts of lists from the data centre, which are then separated manually and distributed within the company and to the branch offices. The archives in the basement are crammed to the ceiling ...
- Scanning services ...
Incoming mail from the filing tray to the ring binders and then onto the shelf?
- Elektronic Files ...
All the documentation is neatly filed away in one of countless ring binders. So it should come as no surprise if it takes a while to find that one specific receipt ...
- Software as a service ...
You don't want to set up your own DMS, instead you want experts to help you manage your documents using the ASP model preferably on the highly secure mainframe ...

LDMS/z: Rootpacks & modules

	RootPack RootPack (ERP)
Archiving	Output DocIndex Speed ReM oStore Receiver Count
Printing & distributing	Separator xPrint [Bundle]Scheduler Transmitter ePost PortoOptimizer

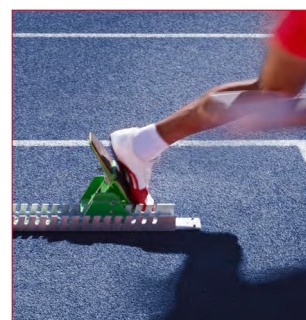
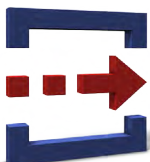
Secure in the archive ...

LDMS/z is the archive.

LDMS/z takes terabytes of data from application programs immediately after generation and archives them effortlessly and safely and automatically.

The zServer gets to demonstrate its strengths when the data is accessed thousands of users can access the archive and even the same document quickly, simultaneously and from different locations.

- As a longterm-archive LDMS/z optimises the entire print output, as well together with ather output systems as Beta 93.
- The efficient management of your total output is guaranteed all production and system log files are available online immediately after creation.
- Both conventional (tapes, discs, ...) and new storage media (e.g. COLD, EMC-Centera, ...) are addressed.
- Lists can be split up, bundled, distributed and printed according to individual settings.
- Bulk mailings become more economical thanks to postage optimisation!



- And for customers who only want to archive SAP output:
LDMS/z RootPack (ERP) is the central archive that reduces the burden on overly large SAP databases and maintains their performance.

... and available on every workstation

LDMS/p is the gateway with the most to the host ...

...and directly to the archive. Every single job step is carried out quickly and without difficulty from archiving via online searches through to editing.

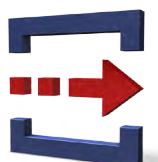
Several Clients, WebAccess and other additional modules enhance the system and allow adaptation to special requirements whenever required.

LDMS/p significantly reduces the input required for the management, editing, distribution and storing of lists and documents. Document-based processes become leaner, faster and thus more efficient:

- LDMS/p shows and allows editing of all documents, from lists to SAP files even if they are structured as electronic files (e.g. credit or personnel files).
- Employees only see the documents they are authorised to access. Workflows during editing of a document can be configured (processing of transactions).
- LDMS/p is user-friendly and ready for immediate use.
- Diverse interfaces open LDMS for other systems (SAP R/3, Lotus Notes, Windows); documents created by users can be transferred directly from the current application at the click of a mouse.
- Transfers from and to the PC are encrypted. Links and attachments can be added.
- All work steps are logged. All versions of a document remain accessible.
- Paper or microfilm archive costs are drastically reduced!
- Just archive and then retrieve? No problem, directly from Windows Explorer using drag'n drop no client required.
- The advantages of LDMS/p can be used for data, which are stored with Beta UX on Unix-systems.

LDMS/p: clients & modules

Clients:	Light Standard Pro
For all clients:	AFP Forms2
For client Pro:	Edit Scan
Access to archive via browser:	Web Basis Modul WebAccess WebServices workFlow
ArchiveManager:	Archive Link FileManager MailManager
Filetransfer LAN/Archiv:	xSpooler ScanConnector xRetriever



System:



A genuine resource-saving client-server technology makes integration of the mainframe into the PC world possible.

This in turn makes a diverse range of possible configurations possible all tailored to meet the customer's requirements. The modular structure guarantees that LDMS can be configured flexibly and adapted to current needs whenever, wherever.

Thanks to its open architecture, the system can be effortlessly integrated into the existing IT environment:

- LDMS/z is compatible with all versions of the operating systems z/OS, OS/390 and MVS/ESA with the corresponding JES2 or JES3 in every case.
- LDMS/p is platform-independent since all the components were developed in JAVA. This means it can be installed on all conventional operating systems.

LDMS is easy to install LDMS/z can be installed with the help of SMP/E; LDMS/p in just a few steps thanks to central software distribution – for thousands of users.